



The Luweave Way

MISSION

We create elegant engagements for people, communities, and the planet through our weaved wisdom and technologies.

Our MISSION is deeply entwined with three aspects of the heritage built up over the decades since the company was established.

Inclusion

Our roots are in the Italian company Olivetti, which was founded on a core philosophy of respect for human dignity. The attitude of embracing diverse values and committing to people is an inheritance that is deeply ingrained in our corporate culture.

Long-term Relationships

We value the relationships we create with our clients by committing ourselves fully to the task and following through to the end. We will continue to be a trusted partner in a world that is becoming increasingly changing.

Transformation

We are ready to take on challenges, to evolve, and to look ahead to the future. Founded in 1961, our company has been transforming itself by pioneering its markets throughout significant changes in the social environment. This is a spirit we share with NTT DATA, a company that has contributed to social innovation for many years.

NTT DATA Luweave has its roots in Olivetti, the Italian firm known for their distinctive product design in the twentieth century. With the concept of respect for human beings at the core, we adhere to the philosophy of the founder of Olivetti, Camillo Olivetti, a pioneering figure whose unique design thinking included beautiful and functional products that created a new lifestyle. Focused on these ideas, our engagements are enhanced by bold and flexible sensibilities seeking inclusive harmony between people and community and, by extension, the planet. To us, these are "elegant engagements." We build trusted relationships with all stakeholders based on the NTT DATA Group Mission Statement: To use information technology to create new paradigms and values, which help contribute to a more affluent and harmonious society.

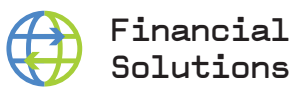
CORPORATE MESSAGE



The Corporate Message is the motto that guides us toward our Mission. With its door motif, the Corporate Message logo stands for creating and providing solutions that open the door to the future.

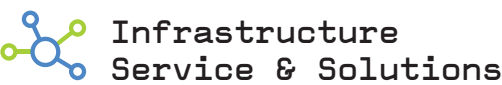
Our Business

From cutting-edge financial systems to hands-on local businesses, we keep bringing innovation.

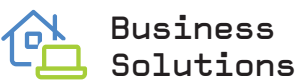


System Solutions for Financial Institutions

We work together to develop new financial services that are not confined by existing frameworks but based on solutions that live up to the trust of our clients.



Creating diverse value, we build and operate flexible and durable IT infrastructures together with our clients.



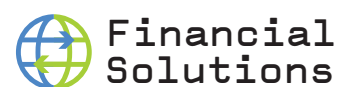
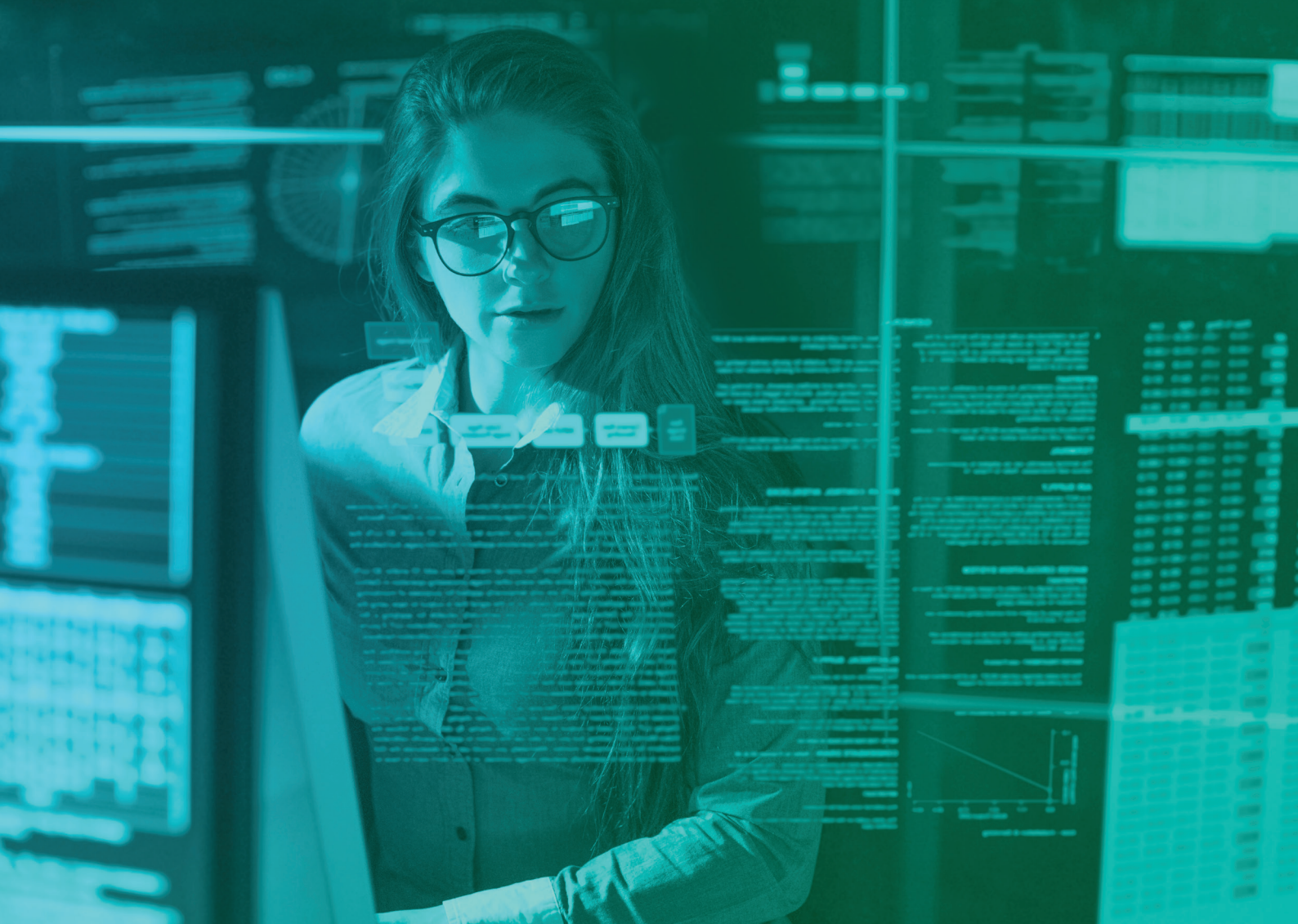
Business Solutions for Japan Agricultural Cooperatives

We work together to develop IT services that are highly regarded in the community while resolving issues for our clients and continuing to grow together.



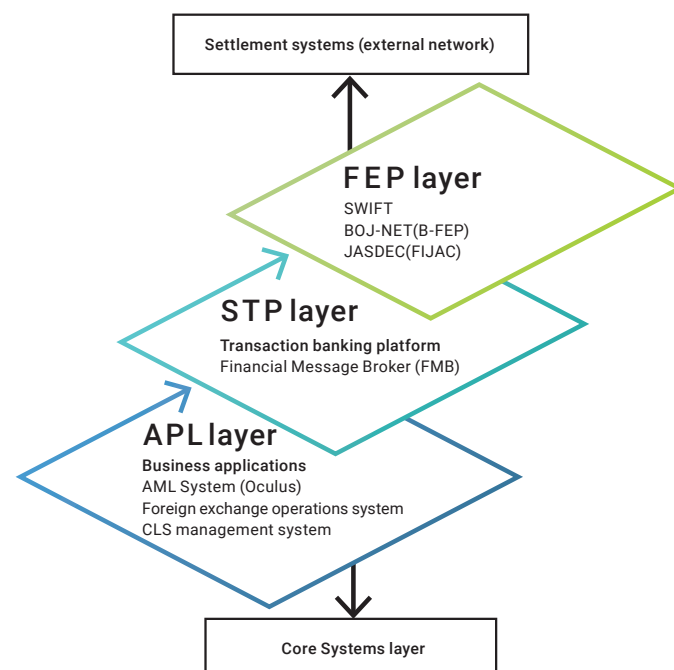
Authorization systems	Hubs in Japan	Expertise and skills
50	40	188
plus years	plus locations	qualification types

- Expertise and Technical Capabilities**
Specialized in every field, our professionals demonstrate their expertise in a coordinated manner.
SWIFT Certified Specialists
CAMS (ACAMS®)
Cisco Career Certifications
- Support Systems**
Our long-term stable support systems are built by engineers with in-depth knowledge of business operations.
- Flexibility**
We deliver open-ended, optimum services globally by multi-vendor support system
- Group Strength**
We provide extensive services without limitations through strategic collaboration with the NTT DATA Group.



System Solutions for Financial Institutions

With SWIFT, anti-money laundering, BOJ-NET connectivity, and foreign exchange systems as the mainstay of our business, we draft proposals for maximizing business performance through high-level consultations that combine knowledge of financial practices with ICT knowhow. We also provide a one-stop service that includes building and installing systems, and maintenance services after start of operations.

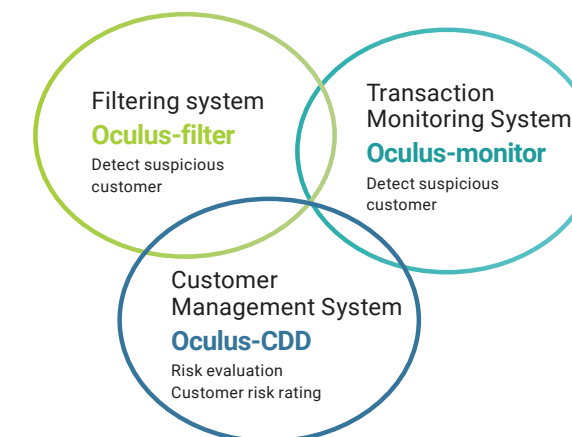


Anti-money laundering (AML)

To counter international money laundering and terrorism financing, we were among the first to train professional teams in Japan. As well as supplying the relevant systems, we support measures that are realistic for the Japanese market to ensure effective AML responses rooted in the risk-based approach required by international standards and reforms of the operational aspects of business management processes.

- Support customer management and scoring model analysis
- Support creation of rules for transaction monitoring
- Regular information exchanges with the regulatory authority
- Organize AML seminars

Developed in-house, our AML system (the Oculus series) facilitates integrated management interlinked with filtering, monitoring, and customer management. The system supports continuous updates of laws, regulations, and guidelines, and is used at more than 300 financial institutions, including shared services.



Global Transaction Banking

We offer solutions that support initiatives for global transaction banking at all financial institutions in step with shifting client needs and the internationalization of financial services.

SWIFT (International Financial Network)

We handle large-scale projects in Japan and overseas supported by the advanced technical capabilities of our SWIFT Certified Specialists. We also offer a comprehensive range of SWIFT product support and related solutions.

BOJ-NET (Bank of Japan Network)

We provide solutions and services that support financial institutions, including trust banks, securities brokerages, foreign banks and other major financial institutions, with operational management and connectivity to BOJ-NET.

CLS Management System

(Simultaneous Multi-currency Settlement)

By putting together the functions required for CLS settlements as a package solution for CLS settlement members, we provide a financial system that supports settlement risk reduction.

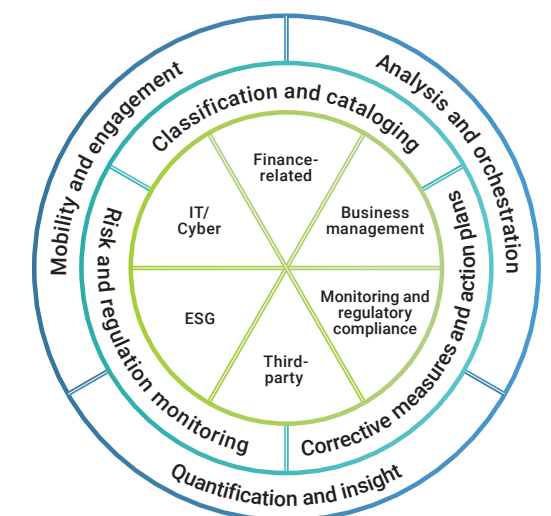
Foreign Exchange System

In addition to foreign exchange solutions, we also provide services and solutions that lead to more efficient international data exchanges and the settlement business by digitizing trade data.

GRC Solutions



Governance (G), Risk (R), Compliance (C)—the corporate business environment is constantly changing. We implement more efficient risk management and secure business performance by providing a set of best practices gained from global user performance. Our experts in Japan have been working on GRC solutions since the beginning, and are available to support the introduction of solutions.





Infrastructure Service & Solutions

Responses to changes in the network environment, such as cloud computing and the growth in remote working, have an impact on competitive edge in business. As network specialists, we anticipate needs and provide our clients with optimal network solutions. We also provide cutting-edge IoT solutions that use cloud services and all types of sensors.

- Wireless networks
- Wired networks
- Security
- Unified communication
- Maintenance and monitoring
- Meeting room management
- Cashless canteen solutions
- Image authentication AI
- Sensor information management
- Helpdesk services

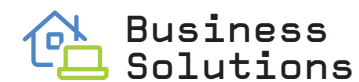
Building Networks

We provide services and solutions that allow clients to focus resources on their core business. All team members are Cisco certified network engineers who optimize the network environment while assessing security measures and effective equipment placement. We support clients with a multi-vendor approach that includes equipment from other companies than Cisco.

IoT Solutions

We make a difference to the business of our clients by providing IoT solutions based on reliable network construction technologies. We turn the ideas of our clients into reality, whether they are portable toilet management systems, image authentication AI systems, meeting room reservation systems, or other “WOW!” ideas. We have even won several awards including Best environmental contribution award in the AI category and Best innovation award in the IoT category at the ASPIC IoT AI Cloud Awards.

Dedicated website for network services
(Only in Japanese)
network.nttdata-luweave.com



Business Solutions for JA and JF

With more than 50 years of shared history, we provide community-based services to the JA Group ranging from system proposals to shop construction and equipment maintenance. We support all aspects of the constantly evolving JA business from financial systems to introducing IoT for agriculture at the place of production.

- Branch systems
- Back-office systems
- Operational and monitoring systems
- Comprehensive consulting for shop systems
- Equipment maintenance
- IoT solutions for agriculture
- Sell and maintain multi-vendor IT equipmentpdesk services

Product

With the focus on tightening and streamlining branch businesses at the JA Group, we propose, develop, migrate, and operate systems (online/network/business focused/ cash management/ liaison and business support) that are specially focused on the agricultural business.

Layout

Our team of experts offers store update services. We propose functional and user-friendly store designs based on network infrastructure and security management. We also undertake the entire ordering process, which is otherwise decentralized.

Operational and Maintenance Services

From infrastructure development to its maintenance and management, we provide professional services by highly specialized engineers and a service network that comprises all of Japan to ensure client ICT environments are always in an optimum state.

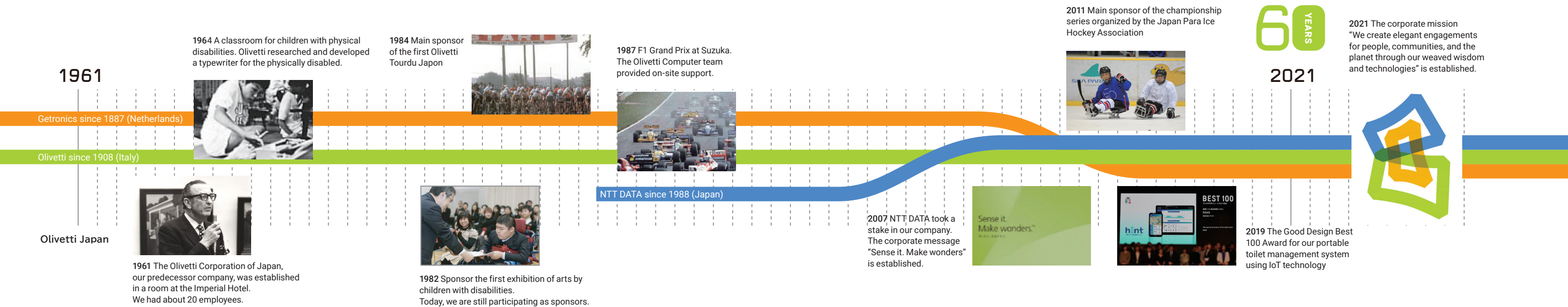
- System/ Network remote monitoring and maintenance
- Onsite CE maintenance
- CAC (Advanced security of 24/365 operation and maintenance)
- IT infrastructure construction, installation, settings
- SPOC helpdesk service

Offices supporting the entire service network in Japan

Tohoku Branch: 3-7-1 Chuodori, Morioka-shi, Iwate
Kanto Branch: 1640 Motoyoshida-cho, Mito-shi, Ibaraki

Metropolitan Branch: 3-22-5 Fujimidai, Kunitachi-shi, Tokyo
West Japan Branch: 3-25-8 Tarumi-cho, Suita-shi, Osaka

History and Social responsibility



Our 60 Years

- 1961.9**
The Italian company Olivetti established the Olivetti Corporation of Japan.
- 1964**
The Audit600 series accounting machine with paper tape punch is released, contributes to growing transactions at the Japan Agricultural Cooperatives (JA).
- 1966**
Started campaign to provide children with cerebral palsy with electric typewriters as a means of communication.
- 1967**
The world's first programmable desktop computer, the OLIVETTI PROGRAMMA 101 (P101), is released.
- 1973**
Nikkei Advertising Award for Best corporate advertisement
*This is the second time we won the award. The first time was in 1962.
- 1982**
Sponsor the first exhibition of arts by children with disabilities
*We are still participating as sponsors.
- 1988**
Expansion of activities based on the System Integrator Olivetti theme.
- 1989**
Developed the SWIFT messaging system.
- 1996**
Obtained SWIFT-X.25 vendor qualification.
- 1997**
Launched the Lifecycle Service, a comprehensive support service.
- 1998.3**
Our parent company changed from Olivetti to Wang Global.
- 1999.7**
Our parent company changed from Wang Global to Getronics.
- 1999**
Acquired terminal system with the JA Bank System (JASTEM).

- 2000.1**
Changed name to Getronics Olivetti Japan, Ltd.
- 2000**
Obtained SAS (SWIFT Accredited Services) provider certification as world's first accredited SWIFT interface vendor.
- 2002.4**
Changed name to Getronics Japan, Ltd.
- 2003**
Start of sales of AML system with Japanese language support. First in the industry to support Japanese language blacklist.
- 2005.11**
Obtained Cisco System Gold Certified Partner status
- 2007.7**
Changed name to NTT Data Getronics Corporation when Getronics and NTT DATA concluded a strategic partnership.
- 2011.9**
Fiftieth anniversary, sponsored championship series organized by the Japan Para Ice Hockey Association.
- 2016**
Recognized by the Minister of Health, Labour, and Welfare as a corporation that supports child-rearing.
- 2019**
The Good Design Best 100 Award for our portable toilet management system using IoT technology
- 2020.3**
NTT DATA acquired 100% of the company shares.
- 2020**
The CoolRegi image authentication AI cash register, and hint, our portable toilet management system using IoT technology won awards at the 14th ASPIC IoT AI Cloud Awards 2020.
- 2021.10**
Changed name to NTT DATA Luweave Corporation.

Creating elegant engagements for people, communities, and the planet

The aim of all our IT services and solutions and our social contribution activities is to create elegant engagements for people, communities, and the planet: in other words, to contribute to a beautiful, comfortable, and sustainable society in the long term.

Business SDGs

Measures to prevent terrorism financing	We train specialists to prevent international money laundering and terrorism financing. We support anti-money laundering (AML) measures in various fields.
Support initiatives to reduce food waste	We propose the CoolRegi cash register system to reduce food waste in staff canteens.
Infrastructure support	The wireless LAN concierge finds solutions for a range of issues.
Toilets x IoT	We propose IoT solutions that simultaneously solve environmental and social issues.
Support workstyle reform initiatives	We offer operational support and promote products and services that facilitate corporate workplace reforms such as efficiency, improved productivity, and support for remote working.
Employment support for the disabled	We support employment opportunities by adding support functions for the visually impaired to the CoolRegi cash register system.

Workstyle SDGs

Promote workstyle reform	We promote workstyle reform focused on work-life balance including designing systems for full-time remote work.
A pleasant working environment for both genders	We aim to create an open and pleasant working environment regardless of gender and age, including 100% childcare leave for women (achieved in November 2021).
Active roles for women	We are developing a workplace environment that supports work-home balance and work-childcare balance to create a better working environment for women.
Certified Health & Productivity Management Outstanding Organization	We promote health management initiatives based on the fundamental policies for health management at NTT DATA.

Environmental SDGs

Recycle/reuse waste PC	As well as reducing waste costs, we also make major contributions to CO2 reduction.
Donate emergency supplies to foodbanks	We reduce waste of emergency supplies and support the poorest segments of society.

Corporate Social Responsibility SDGs

Art exhibition by disabled children and adults	We have sponsored the exhibition since it was launched in 1982. We present the NTT DATA Luweave International Award to an outstanding work.
Support the blood donation bus	We invite the blood donation bus every spring and fall, and we organize appeals and promotions to save more lives. In 2020, we were recognized for services to blood donation by Kawasaki City.
Protect pregnant and nursing women	We collect cancelled stamps to fund activities to protect the lives and health of pregnant and nursing women in developing countries suffering from poverty and discrimination.
Nepal reconstruction	We collect spoiled and unused postcards to fund learning environments for children such as school facilities and rebuilding schools destroyed in major earthquakes.
Donate portion of in-house vending machine sales	We donate a portion of the proceeds from in-house vending machines to UNICEF.
Regional support	We support sales of sweets by social welfare corporations to facilitate safe and secure employment for people with disabilities.

CEO Message

Doing Our Utmost to Create a Better Society Together with Clients

NTT DATA Luweave Corporation was established in 1961 as the Japanese subsidiary of Italian company Olivetti SPA and has undergone multiple name changes during its history to date. These past changes were not by choice, but the result of capital movement at the parent company. NTT DATA Luweave is the name that we chose ourselves by looking back at our history and by carefully reconsidering our identity to express who we are as a company. We are sure that the name suitably expresses our unique corporate background and history as well as our determined ambitions for the future.

Luweave is a coined word combining the Latin word “lux,” meaning light and pride, and the English word “weave.” It signifies our intention to weave the passions of our predecessors to create bold and flexible businesses, and to help weave a society that shines brightly into the future.

Digital technology will likely evolve at an accelerating pace going forward. That will undoubtedly yield greater functionality and efficiency but it is important that it also brings people closer together, transforms our community into a better place that embraces diversity, and helps sustain our planet. We call the required concepts for this era “elegant engagements.”

NTT DATA Luweave will do its utmost to create a better society together with clients as a member of



the NTT DATA Group based on our mission to creating elegant engagements for people, communities, and the planet through our weaved wisdom and technologies.

三宅 信一郎

Shinichiro Miyake
President & CEO

Company Information

Corporate Name	NTT DATA Luweave Corporation										
Head Office	2-2-1 Otemachi Chiyoda-ku, Tokyo 100-0004, Japan 1-14 Nisshin-cho, Kawasaki-ku, Kawasaki-shi, Kanagawa 210-0024, Japan										
Established	21-Sep-61										
President	Shinichiro Miyake										
Capital	490 million yen										
Shareholder	NTT DATA Corporation (100%)										
Directors and Auditors	<table><tr><td>President & Chief Executive Officer Shinichiro Miyake</td><td>Corporate Auditor (part-time) Moritaka Watanabe Atsushi Kimura</td></tr><tr><td>Executive Vice President & Director Satoshi Takahashi Tamotsu Mizuno</td><td></td></tr><tr><td>Senior Vice President & Director Hiroataka Shimono</td><td>Senior Vice President Tsuyoshi Fukushima Yasuhiko Sato Hirotsugu Ishimaru Satoshi Tokunaga Takahiro Fujishita Hiroshi Ueyama</td></tr><tr><td>Director (part-time) Atsushi Seto Takaya Kato Koji Yoshimoto Nobuhiko Togashi Tomoyuki Uzawa</td><td></td></tr></table>			President & Chief Executive Officer Shinichiro Miyake	Corporate Auditor (part-time) Moritaka Watanabe Atsushi Kimura	Executive Vice President & Director Satoshi Takahashi Tamotsu Mizuno		Senior Vice President & Director Hiroataka Shimono	Senior Vice President Tsuyoshi Fukushima Yasuhiko Sato Hirotsugu Ishimaru Satoshi Tokunaga Takahiro Fujishita Hiroshi Ueyama	Director (part-time) Atsushi Seto Takaya Kato Koji Yoshimoto Nobuhiko Togashi Tomoyuki Uzawa	
President & Chief Executive Officer Shinichiro Miyake	Corporate Auditor (part-time) Moritaka Watanabe Atsushi Kimura										
Executive Vice President & Director Satoshi Takahashi Tamotsu Mizuno											
Senior Vice President & Director Hiroataka Shimono	Senior Vice President Tsuyoshi Fukushima Yasuhiko Sato Hirotsugu Ishimaru Satoshi Tokunaga Takahiro Fujishita Hiroshi Ueyama										
Director (part-time) Atsushi Seto Takaya Kato Koji Yoshimoto Nobuhiko Togashi Tomoyuki Uzawa											
Employees	631 (as of April 1, 2022)										
Group Companies	Ex's Annex, Inc.										
Licenses and permits	Kobutsusho second-hand dealer's license (No. 452500027756 Kanagawa prefecture public safety committee) License for general worker dispatching undertakings (Ha 13-310152) General construction business license (Han-2 No. 124040 License by the Governor of Tokyo Categories: Sheet metal business, telecommunications engineering, interior finishing work) * Authorized architect										
ISMS Certifications	<table><tr><td>We obtained certification Information Security Management System (ISMS) ; ISO/IEC 27001/ JIS Q 27001.(Certified location: Head Office, Kawasaki Office)</td><td> IS 500600 / ISO 27001</td></tr></table>			We obtained certification Information Security Management System (ISMS) ; ISO/IEC 27001/ JIS Q 27001.(Certified location: Head Office, Kawasaki Office)	   IS 500600 / ISO 27001						
We obtained certification Information Security Management System (ISMS) ; ISO/IEC 27001/ JIS Q 27001.(Certified location: Head Office, Kawasaki Office)	   IS 500600 / ISO 27001										

※The company names, product names, and service names in this pamphlet are the trade names, trademarks, or registered trademarks of NTT DATA Luweave or their respective companies.



Key Visual

The key visual is a graphic image that expresses our MISSION in visual terms. With its door motif, the visual is composed of colors that symbolize the three aspects of our heritage.

NTT DATA Luweave Corporation